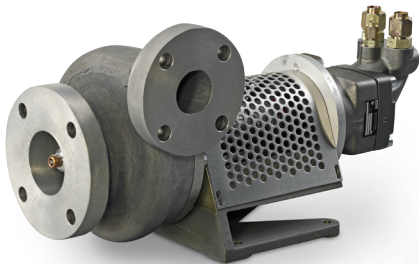
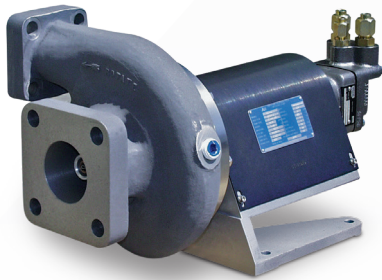


Models AC-18

Boost Pump/Trailer Off-Load



Right Hand Discharge
2 x 3 x 6 & 2 x 4 x 6



Left Hand Discharge
1 x 2 x 4.5 & 1.5 x 2.5 x 6A

Specifications

Flow Range	gpm	5 – 500			
	lpm	20 – 1,900			
NPSHR	feet	3 – 35			
	meter	2 – 10			
Differential Head	feet	40 – 780			
	meter	13 – 240			
Pump Design Rating	hp	1 – 85			
	kw	0.75 – 60			
RPM Range	rpm	1 x 2 x 4.5	1.5 x 2.5 x 6A	2 x 3 x 6	2 x 4 x 6
		2,000-10,200	2,000-7,200	2,000-8,100	2,000-8,100

Features & Benefits

- Compact design is lightweight and reduces installation time
- Hydraulic drive allows operators to use truck pto system
- Bearing housing designed for well service, heavy duty applications
- Shaft seal features CFS design, extending seal life

Applications

- Well service
- Transfer boost pump
- Trailer off load

Typical Scope of Supply

- Pump, bearing housing and hydraulic coupling
- CFS mechanical seal
- Purge ports

Liquids Pumped

- Nitrogen
- Methane
- Argon

Optional Accessories

- Purge kit (bearings)
- Mating flanges